

TC 10 Request for Information

generated by Dave Helmericks

Project Manager

Yavapai- Apache Nation

RFI #

DD2

Date

12/23/25

From

YAVUTH

To

SEFTON EN6

Question

GATE VALVES ON WATER MAIN
PLEASE SPEC LAYOUT

Answer

- ADD 5m. 8" GATE VALVES SEPARATELY
- DELETE FIRE HYDRANT @ STATION 0+00
INSTALL BLOW-OFF VALVE @ THE
END OF LINE OR BLUE JAY
- SPEC A-236B SERIES B" GATE
VALVE SEE ATTACHED

Charles Helmericks

From: Luke sefton <LS@sefengco.com>
Sent: Wednesday, December 24, 2025 10:44 AM
To: Charles Helmericks; Sharie Benson
Cc: Timothy Huskett; Shivaraj Shanmukh
Subject: Re: Request #140701W-2502

CAUTION: This email originated from outside your organization. Exercise caution when opening attachments or on clicking links from unknown senders.

David

The reason you can see the dots is that they have disappeared. I am updating with better images. We will need to add an air release valve on the cul-de-sac and replace the fire hydrant with a blow-off valve at the end of the line on Blue Jay.

Sincerely,

PRESIDENT
Luke a Sefton



40 Stutz Bearcat Drive, Sedona, AZ 86336

Office: (928) 202-3999

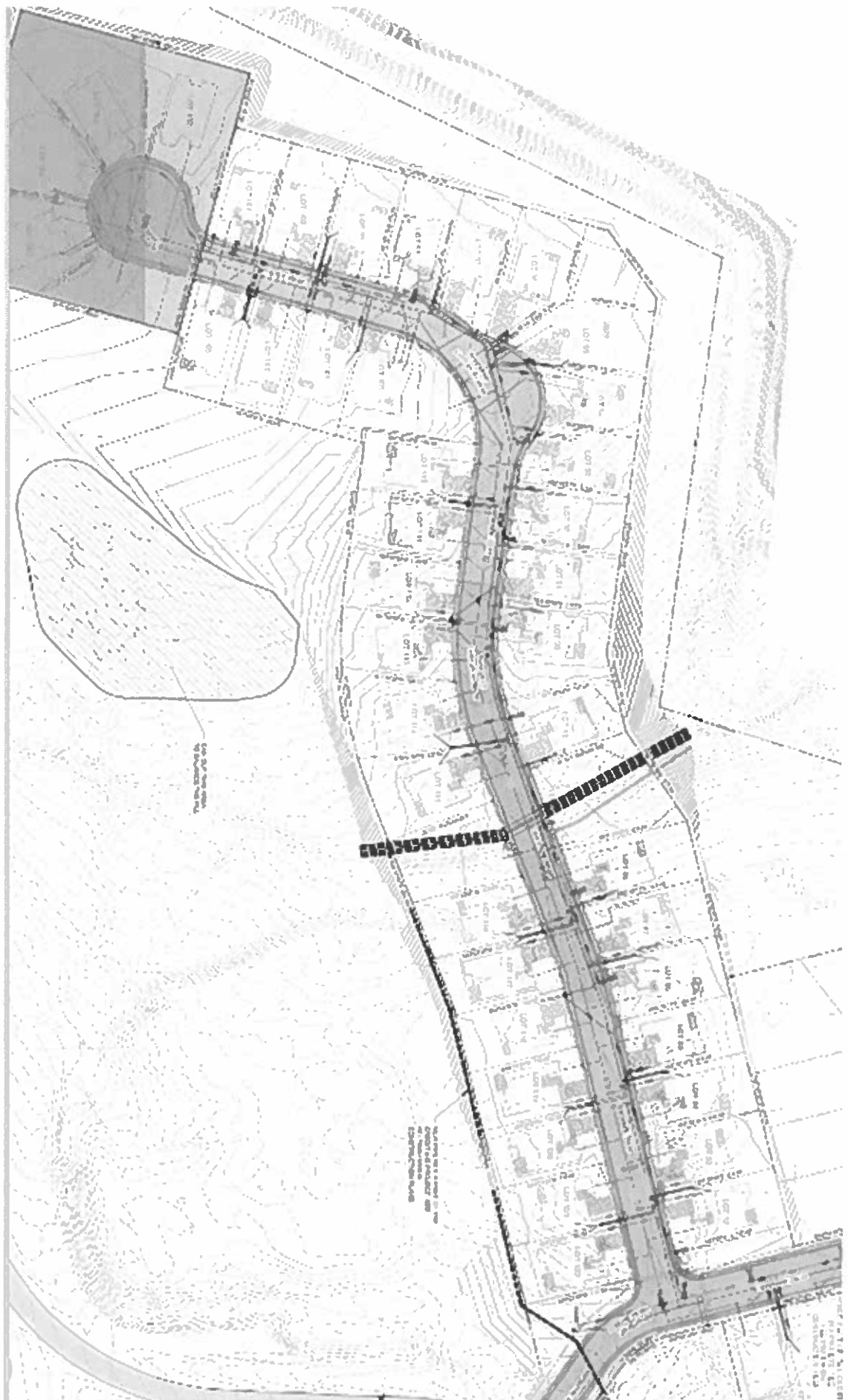
LS@sefengco.com

www.SeftonEngineeringConsultants.com

From: Charles Helmericks <chelmericks@yan-tribe.org>
Sent: Wednesday, December 24, 2025 9:22 AM
To: Luke sefton <LS@sefengco.com>; Sharie Benson <sbenson@yan-tribe.org>
Cc: Timothy Huskett <TH@sefengco.com>; Shivaraj Shanmukh <ss1@sefengco.com>
Subject: RE: Request #140701W-2502

CAUTION: This email originated from outside of the organization.

Hi Luke,

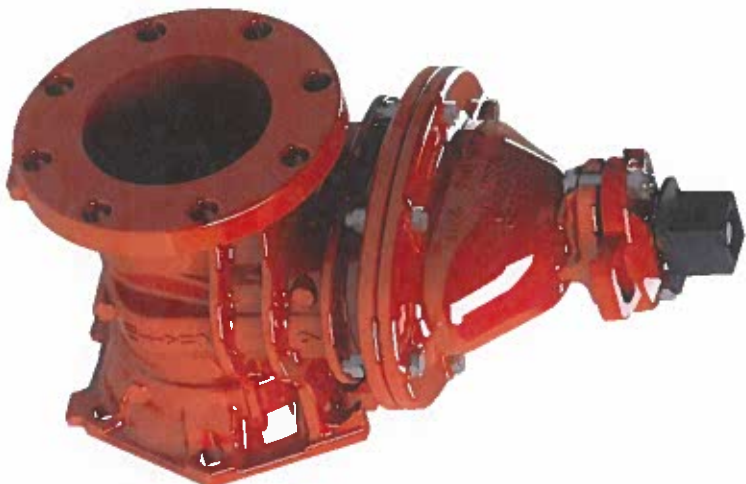








MUELLER



MUELLER COMPANY

A-2361 Series 8 in. Mechanical Joint x
Flanged Ductile Iron Open Left Resilient
Wedge Gate Valve

Part #MA2361199000XOL | Item #5154084 |
Manufacturer Part #A2361199000XOL

☆☆☆☆ (0) [Write a Review](#)

Valve Size: 8 in

8 in

[Log in or Create Account](#)

[Log in](#) or [Create an Account](#) to see product availability.



A2361 RESILIENT WEDGE GATE VALVES, 350psi



1. GENERAL CLASSIFICATION

- 1.1** Mueller® Resilient Wedge Gate Valves comply with ANSI/AWWA C515.
- 1.2** Mueller Resilient Wedge Gate Valves are approved by Factory Mutual Research Corporation (FM).
- 1.3** Mueller Resilient Wedge Gate Valves are listed by Underwriters Laboratories, Inc. (UL). Valves with actuators are not listed.
- 1.4** Mueller Resilient Wedge Gate Valves are tested and certified to ANSI/NSF Standard 61 & 372.
- 1.5** Mueller Resilient Wedge Gate Valves are suitable for potable water applications.
- 1.6** Mueller Resilient Wedge Gate Valves are iron body, fully encapsulated resilient wedge type.
- 1.7** Mueller Resilient Wedge Gate Valves are manufactured in the U.S.A. at an ISO9001 Certified factory.

2. SIZE RANGE, WORKING TEMPERATURE, AND WORKING PRESSURE

- 2.1 Sizes:** 3" to 12".
- 2.2 Working Temperature:** 33°F minimum to 170°F maximum working temperature.
- 2.3 Working Pressure:** 350psi for AWWA, UL and FM.

3. TYPE OF VALVE

- 3.1** Resilient Wedge Gate Valves are non-rising stem type.
- 3.2** NRS Resilient Wedge Gate Valves feature O-ring stem seals.
- 3.3** Resilient Wedge Gate Valves are available to either open left or open right.
- 3.4** Resilient Wedge Gate Valves have a 2" square wrench nut complying with AWWA C515. Optional hand wheels are available.
- 3.5 Resilient Wedge Gate Valves are offered with the following end connections:**
 - 3.5.1 Flanged Ends** with flange drilling complying to ASME B16.1 Class 125 (ISO PN10/PN16 drilling optional). Per ANSI/AWWA C111, working pressure above 250psi requires the use of a special gasket rated for the higher pressure.
 - 3.5.2 Mechanical Joint Ends** complying with ANSI/AWWA C111/A21.11.
- 3.6 Resilient Wedge Tapping valves are offered with the following end connections:**
 - 3.6.1** Inlet flange machined specifically for mating with Tapping Sleeves and Crosses. Raised ring on flange face complies with MSS SP-60. Drilling complies with ASME B16.1 Class 125 flange.
 - 3.6.2** Standard Mechanical Joint outlet connection complies with ANSI/AWWA C111/A21.11 and is precision machined for proper alignment of Mueller® Drilling Machines.

A2361 RESILIENT WEDGE GATE VALVES, 350psi

4. MATERIAL SPECIFICATIONS

- 4.1 Cap screw** – Stainless Steel Type 316.
- 4.2 Wrench nut** – Ductile Iron, ASTM A-536.
- 4.3 Handwheel** – Cast Iron, ASTM A-126, Class B.
- 4.4 Stuffing box** – Ductile Iron, ASTM A-536.
- 4.5 Stem O-rings** – Nitrile, ASTM D2000.
- 4.6 Anti-friction washers** – Acetal.
- 4.7 Stem** – Manganese Bronze, CDA Alloy C67600.
- 4.8 Bonnet** – Ductile Iron, ASTM A-536.
- 4.9 Bonnet seal** – O-ring, Nitrile, ASTM D2000.
- 4.10 Stuffing box bolts & nuts** – Stainless Steel Type 316.
- 4.11 Bonnet bolts & nuts** – Stainless Steel Type 316.
- 4.12 Disc nut** – Bronze, ASTM B-584 Alloy C89833.
- 4.13 Guide cap bearings** – Acetal.
- 4.14 Disc** – 3" Cast Iron, ASTM A-126, Class B
4"-12" Ductile Iron, ASTM A-536.
- 4.15 Disc encapsulated** – SBR ASTM D2000.
- 4.16 Body** – Ductile Iron, ASTM A-536.
- 4.17 Coating** – inside and outside of valve fully coated Mueller PRO-GARD® Fusion Bonded Epoxy - coating complies with ANSI/AWWA C550 and valve is certified to ANSI/NSF Standard 61 & 372.

5. DESIGN FEATURES

- 5.1 Flow way** – fully unobstructed, oversized flow-way. The sealing mechanism is withdrawn from the flow-way in a full open position. No pockets in bottom of flow-way to trap sediment or debris. The flow-way will permit passage of full-sized shell cutters.
- 5.2 Bronze Disc Nut** – on all valves.
- 5.3 Anti-Friction Washers** on non-rising stem valves – located above and below the thrust collar portion of the stem to reduce friction and provide more effective conversion of operating torques into seating loads.
- 5.4 Stem** for non-rising stem valves, with O-ring Seals – One O-ring is located below the thrust collar of the stem and two are located above the thrust collar, the upper most serving as a dirt seal. The O-rings and thrust collar are factory lubricated. The two primary O-rings seal the thrust collar area from outside contaminants and water, and retain an ample amount of lubricant on the thrust collar and anti-friction washers to reduce operating torque and wear.
- 5.5 Stem** – The threads on the bronze stem are Acme form threads for strength and efficiency. The stem thrust collar is made integral with the stem -- and is formed by a heat upset operation.
- 5.6 Upper Stem O-ring Replacement** – The two O-rings above the thrust collar of all Mueller Resilient Wedge Gate Valves can be replaced with the valve in the fully open position, under

A2361 RESILIENT WEDGE GATE VALVES, 350psi



pressure, with no leakage.

- 5.7 Corrosion Resistance** – all inside and outside cast iron surfaces are coated with Mueller PRO-GARD® Epoxy Coating, 10 mils nominal. Mueller PRO-GARD® Epoxy Coating is non-toxic and imparts no taste to water. Valves comply with ANSI/AWWA C550 and are certified to ANSI/NSF Standard 61 & 372.

6. OPTIONAL FEATURES

- 6.1** Mueller A-2361 350psi Resilient Wedge Gate Valves can be furnished with the following optional designs or features:
- 6.1.1 Gearing** – Bevel and Spur gearing available. Bevel geared valves are for horizontal installations; spur geared for vertical. Geared valves provide an additional bearing to support the extreme end of the stem.
 - 6.1.2 Position Indicator** – Available for NRS valves 3" and larger.
 - 6.1.3 Stem** – Silicon bronze - ASTM B98 C66100; 304 Stainless Steel or 316 Stainless Steel.
 - 6.1.4 Disc encapsulation and O-rings** – EPDM ASTM D2000.

7. TEST PRESSURE

- 7.1** The pressure test on each Mueller Resilient Wedge Gate Valve meets the requirements of AWWA Standard C515 for Resilient Seated Valves.
- 7.1.1** Each Mueller Resilient Wedge Gate Valve is subjected to two pressure tests. The seat test is at the working pressure of AWWA valves and 1-1/2 times working pressure of UL Listed valves. Shell tests are at two times the working pressure.
 - 7.1.2** Pressure tests at the working pressure shall show NO leakage past the seat from either side of the wedge or at the flange joints. Pressure tests at twice the working pressure shall show NO leakage through the metal or flange joints.
 - 7.1.3** Test pressures are as follows: 525psi seat test, 700psi shell test.



Water (U.S.) 1.800.423.1323
www.muellercompany.com
moreinfo@muellercompany.com

Mueller Canada 1.705.719.9965
www.muellercanada.com
more-info@muellercanada.com

International 1.423.490.9555
www.mueller-international.com
international@muellercompany.com

Copyright © 2017 Mueller Co., LLC. All Rights Reserved. The trademarks, logos and service marks displayed in this document herein are the property of Mueller Co., LLC, its affiliates or other third parties. These products are intended for use in potable water applications. Please contact your Mueller Sales or Customer Service Representative concerning any other application(s).