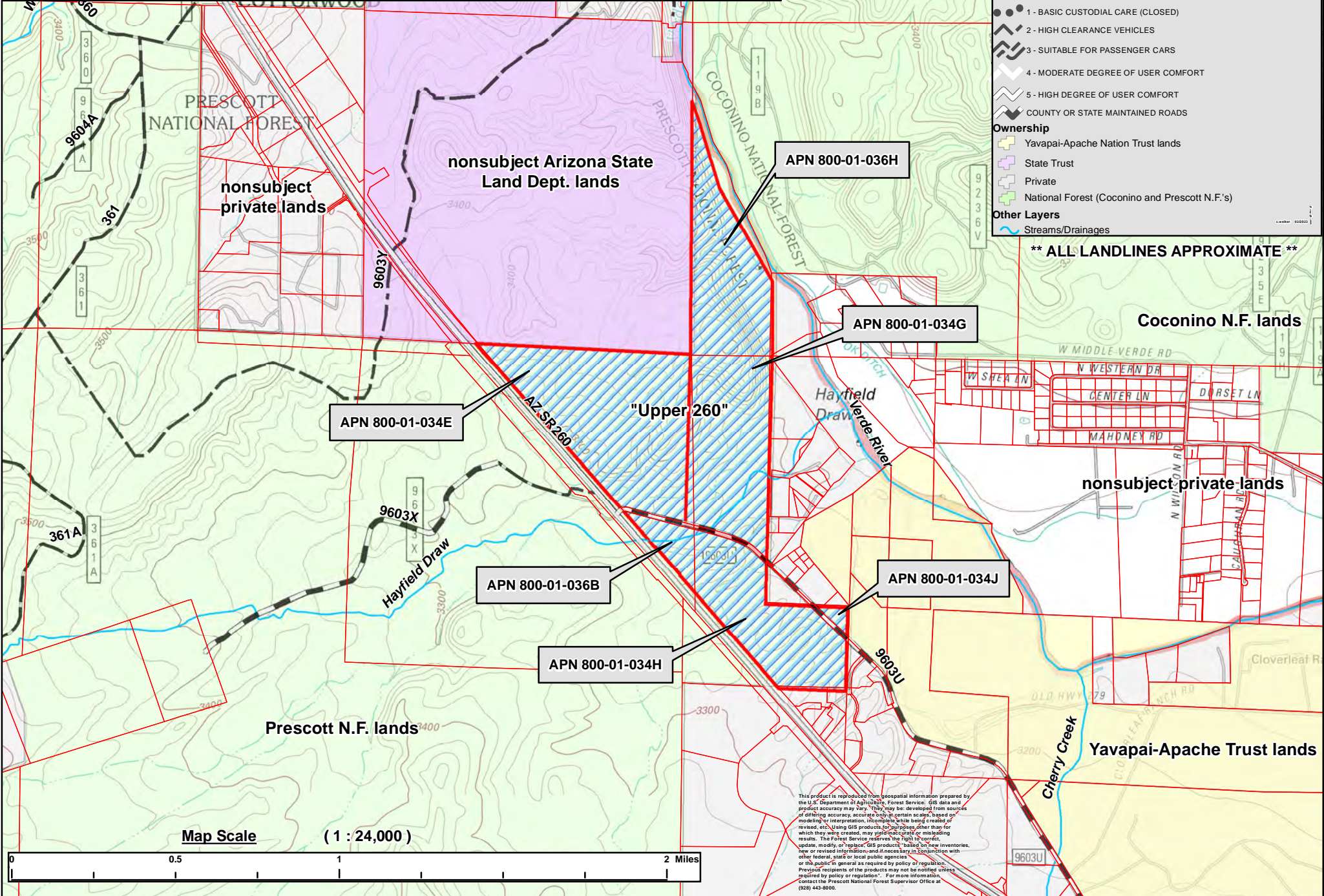


**Yavapai-Apache Nation Land Exchange - Prescott National Forest Parcels**  
**"Upper 260" Parcel / Yavapai Assessor Parcel Numbers 800-01-034E, 034G, 034H, 036B, and 036H**  
**"Cornville, AZ" and "Middle Verde, AZ" USGS 7.5 minute quadrangles**  
**Sections 4 and 5, T. 14 N., R. 4 E., and Section 33, T. 15 N., R. 4. E., G&SRM, Yavapai County, Arizona**  
**Prescott National Forest**

**Legend**

- Preliminary Federal "Upper 260" Parcels (Prescott N.F.)**
  - "Upper 260" Parcels - approx. 391.64 combined acres
- Yavapai County Assessor GIS Parcels**
  - Yavapai County Assessor GIS Parcels
- County, State, and/or National Forest System Roads**
  - 1 - BASIC CUSTODIAL CARE (CLOSED)
  - 2 - HIGH CLEARANCE VEHICLES
  - 3 - SUITABLE FOR PASSENGER CARS
  - 4 - MODERATE DEGREE OF USER COMFORT
  - 5 - HIGH DEGREE OF USER COMFORT
  - COUNTY OR STATE MAINTAINED ROADS
- Ownership**
  - Yavapai-Apache Nation Trust lands
  - State Trust
  - Private
  - National Forest (Coconino and Prescott N.F.'s)
- Other Layers**
  - Streams/Drainages

**\*\* ALL LANDLINES APPROXIMATE \*\***



**Map Scale ( 1 : 24,000 )**



This product is reproduced from geospatial information prepared by the U.S. Department of Agriculture, Forest Service. GIS data and product accuracy may vary. This may be developed from sources of differing accuracy, accurate only at certain scales, based on modeling or interpretation, incomplete while being created or revised, etc. Using GIS products for purposes other than for which they were created, may yield inaccurate or misleading results. The Forest Service reserves the right to correct, update, modify, or replace GIS products, based on new inventories, new or revised information and if necessary in consultation with other federal, state or local public agencies. This product is provided in general as required by policy or regulation. Precise recipients of the products may not be notified unless required by policy or regulation. For more information, contact the Prescott National Forest Supervisor Office at (928) 443-8000.