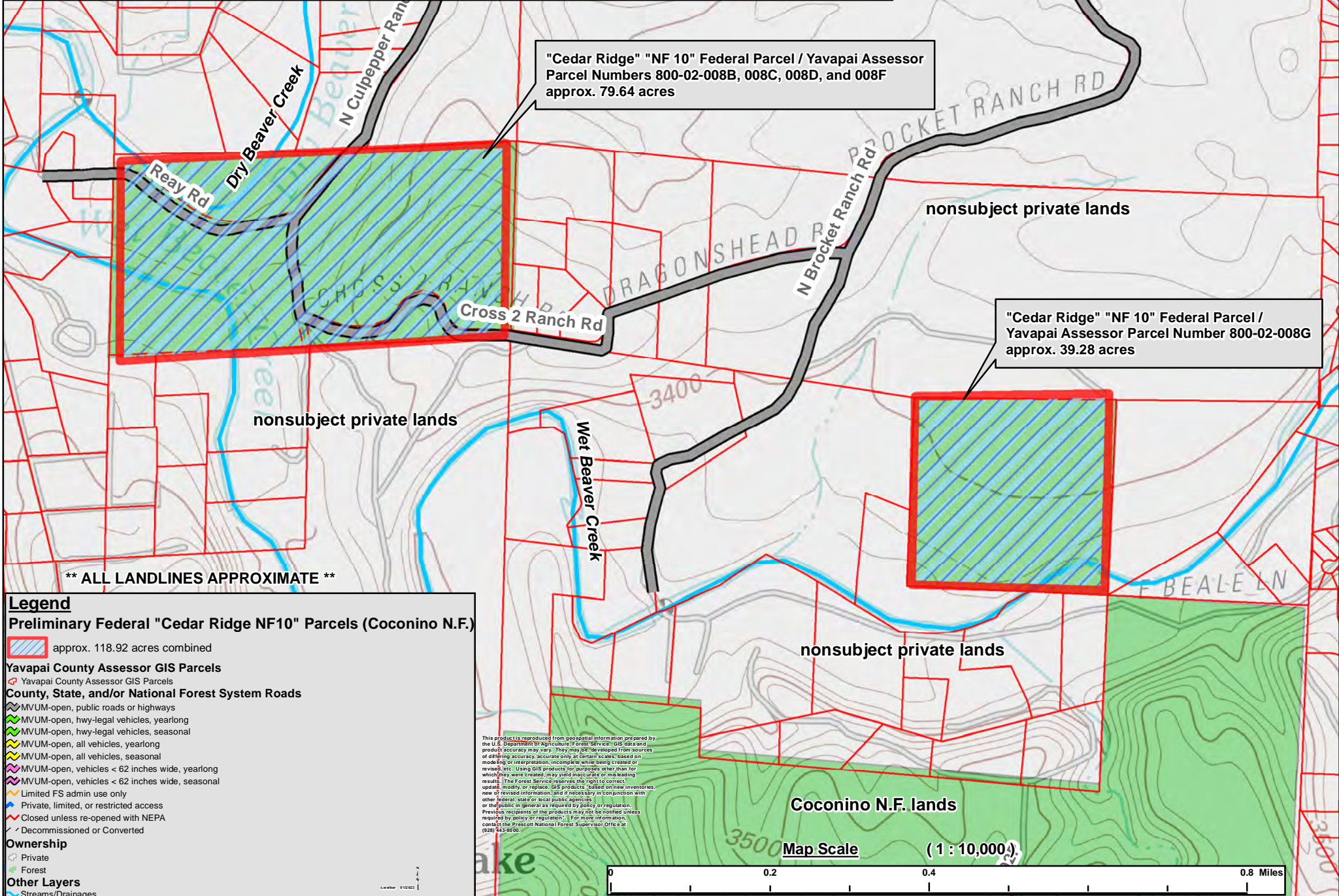


**Yavapai-Apache Nation Land Exchange - Coconino National Forest Parcels**  
**"Cedar Ridge NF 10" Parcel / Yavapai Assessor Parcel Numbers 800-02-008B, 008C, 008D, 008F and 008G**  
**"Camp Verde, AZ" and "Lake Montezuma, AZ" USGS 7.5 minute quadrangles**  
**Sections 4 and 10, T. 14 N., R. 5 E., G&SRM, Yavapai County, Arizona**  
**Coconino National Forest**



"Cedar Ridge" "NF 10" Federal Parcel / Yavapai Assessor Parcel Numbers 800-02-008B, 008C, 008D, and 008F approx. 79.64 acres

"Cedar Ridge" "NF 10" Federal Parcel / Yavapai Assessor Parcel Number 800-02-008G approx. 39.28 acres

nonsubject private lands

nonsubject private lands

nonsubject private lands

Coconino N.F. lands

\*\* ALL LANDLINES APPROXIMATE \*\*

**Legend**

**Preliminary Federal "Cedar Ridge NF10" Parcels (Coconino N.F.)**  
 approx. 118.92 acres combined

**Yavapai County Assessor GIS Parcels**  
 Yavapai County Assessor GIS Parcels

**County, State, and/or National Forest System Roads**

- MVUM-open, public roads or highways
- MVUM-open, hwy-legal vehicles, yearlong
- MVUM-open, hwy-legal vehicles, seasonal
- MVUM-open, all vehicles, yearlong
- MVUM-open, all vehicles, seasonal
- MVUM-open, vehicles < 62 inches wide, yearlong
- MVUM-open, vehicles < 62 inches wide, seasonal
- Limited FS admin use only
- Private, limited, or restricted access
- Closed unless re-opened with NEPA
- Decommissioned or Converted

**Ownership**

- Private
- Forest

**Other Layers**

- Streams/Drainages

This product is reproduced from geospatial information prepared by the U.S. Department of Agriculture, Forest Service. The data and product accuracy may vary. They may be developed from sources of differing accuracy, accurate only at certain scales based on mode of use or interpretation, incomplete while being created or revised, etc. Using GIS products for purposes other than for which they were created may yield inaccurate or misleading results. The Forest Service reserves the right to correct, update, modify or replace GIS products based on new inventories, new or revised information, and if necessary in conjunction with other federal, state or local public agencies or the public in general as required by policy or regulation. Previous recipients of the products may not be notified unless required by policy or regulation. For more information, contact the Prescott National Forest Supervisor Office at (928) 443-8000.

