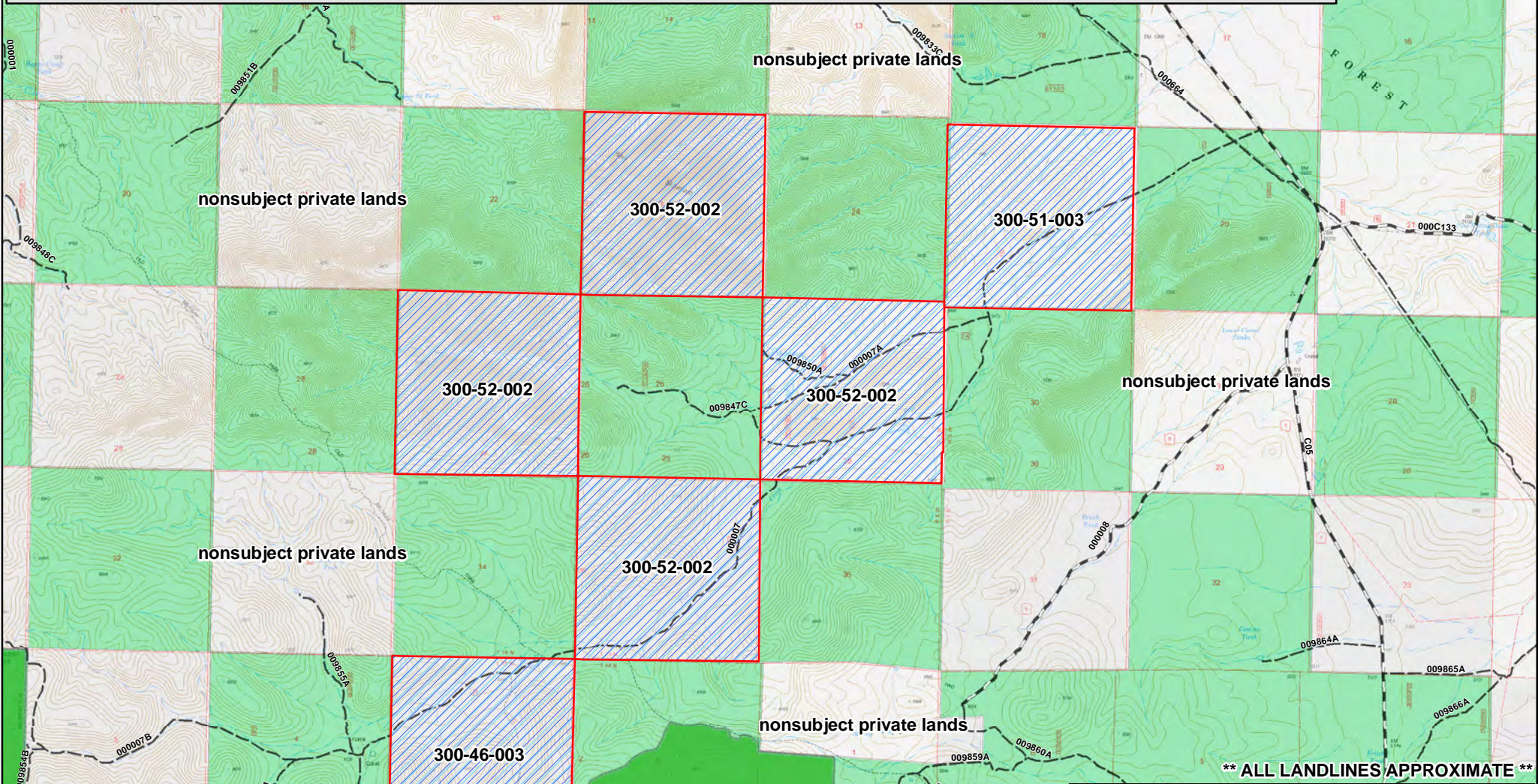
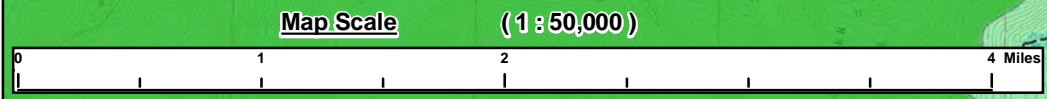


Yavapai-Apache Nation Land Exchange - Yavapai-Apache Nation Fee Simple Parcels
YAN1 Red Mountain Parcels / Yavapai Assessor Parcel Numbers 300-46-003, 300-51-003, and 300-52-002,
"Red Mountain", "Turkey Canyon", "Juniper Mountains", and "Indian Peak" USGS 7.5 minute quadrangles
Section 3, T. 18 N., R. 6 W., Section 19, T. 19 N., R. 5 W., and Sections 23, 25, 27, and 35, T. 19 N., R. 6 W., G&SRM, Yavapai County, Arizona
Prescott National Forest



**** ALL LANDLINES APPROXIMATE ****



Legend

- Yavapai-Apache Nation Land Exchange Fee Property - APNs 300-46-003, 300-51-003, and 300-52-002 (approx. 3,900 acres)
- Prescott N. F. System Roads**
 - 1 - BASIC CUSTODIAL CARE (CLOSED)
 - 2 - HIGH CLEARANCE VEHICLES
 - 3 - SUITABLE FOR PASSENGER CARS
 - 4 - MODERATE DEGREE OF USER COMFORT
 - 5 - HIGH DEGREE OF USER COMFORT
 - COUNTY OR STATE MAINTAINED ROADS
- Ownership**
 - Private
 - USDA Forest Service
- Other layers**
 - Streams/Drainages
 - Juniper Mountain Wilderness Area

This product is reproduced from geospatial information prepared by the U.S. Department of Agriculture, Forest Service. GIS data and product accuracy may vary. They may be developed from sources of differing accuracy, accurate only at certain scales, based on modeling or interpretation, incomplete when being created or revised, etc. Using GIS products for purposes other than for which they were created may yield inaccurate or misleading results. The Forest Service reserves the right to correct, update, modify or replace GIS products based on new inventories, new or revised information, and if necessary in conjunction with other federal, state or local public agencies and the public in general as is required by policy or regulation. Previous recipients of the products may not be notified unless required by public law/regulation. For more information, contact the Prescott National Forest Supervisor's Office at (928) 443-8000.

c.w@ar 01/2023