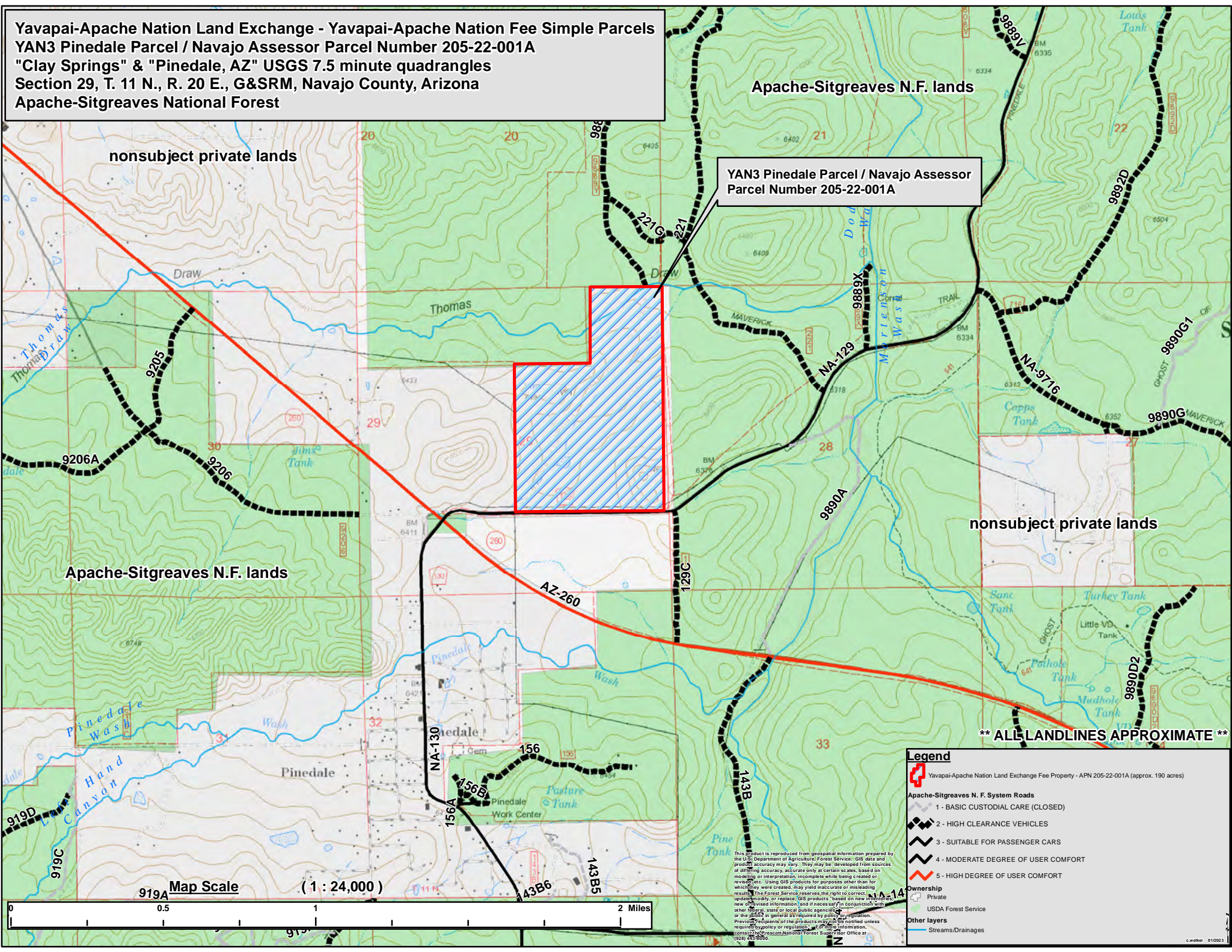


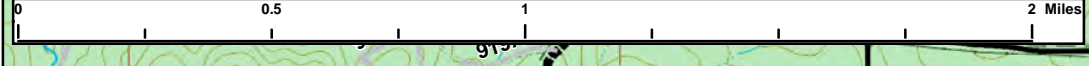
Yavapai-Apache Nation Land Exchange - Yavapai-Apache Nation Fee Simple Parcels
YAN3 Pinedale Parcel / Navajo Assessor Parcel Number 205-22-001A
"Clay Springs" & "Pinedale, AZ" USGS 7.5 minute quadrangles
Section 29, T. 11 N., R. 20 E., G&SRM, Navajo County, Arizona
Apache-Sitgreaves National Forest



YAN3 Pinedale Parcel / Navajo Assessor Parcel Number 205-22-001A

**** ALL LANDLINES APPROXIMATE ****

Map Scale (1 : 24,000)



Legend

- Yavapai-Apache Nation Land Exchange Fee Property - APN 205-22-001A (approx. 190 acres)
- Apache-Sitgreaves N. F. System Roads**
 - 1 - BASIC CUSTODIAL CARE (CLOSED)
 - 2 - HIGH CLEARANCE VEHICLES
 - 3 - SUITABLE FOR PASSENGER CARS
 - 4 - MODERATE DEGREE OF USER COMFORT
 - 5 - HIGH DEGREE OF USER COMFORT
- Ownership**
 - Private
 - USDA Forest Service
- Other layers**
 - Streams/Drainages

This product is reproduced from geospatial information prepared by the U.S. Department of Agriculture, Forest Service. GIS data and product accuracy may vary. They may be developed from sources of differing accuracy, accurate only on certain scales, based on modeling or interpretation, incomplete while being created or revised, etc. Using GIS products for purposes other than for which they were created, may yield inaccurate or misleading results. The Forest Service reserves the right to correct, update, modify or replace GIS products based on new information, revised information, and if necessary in conjunction with other maps, state or local public agencies, or the public in general as required by public regulation. Previous editions of the products may be notified unless required by policy or regulation. For more information, contact the Prescott National Forest Supervisor Office at (920) 485-0066.