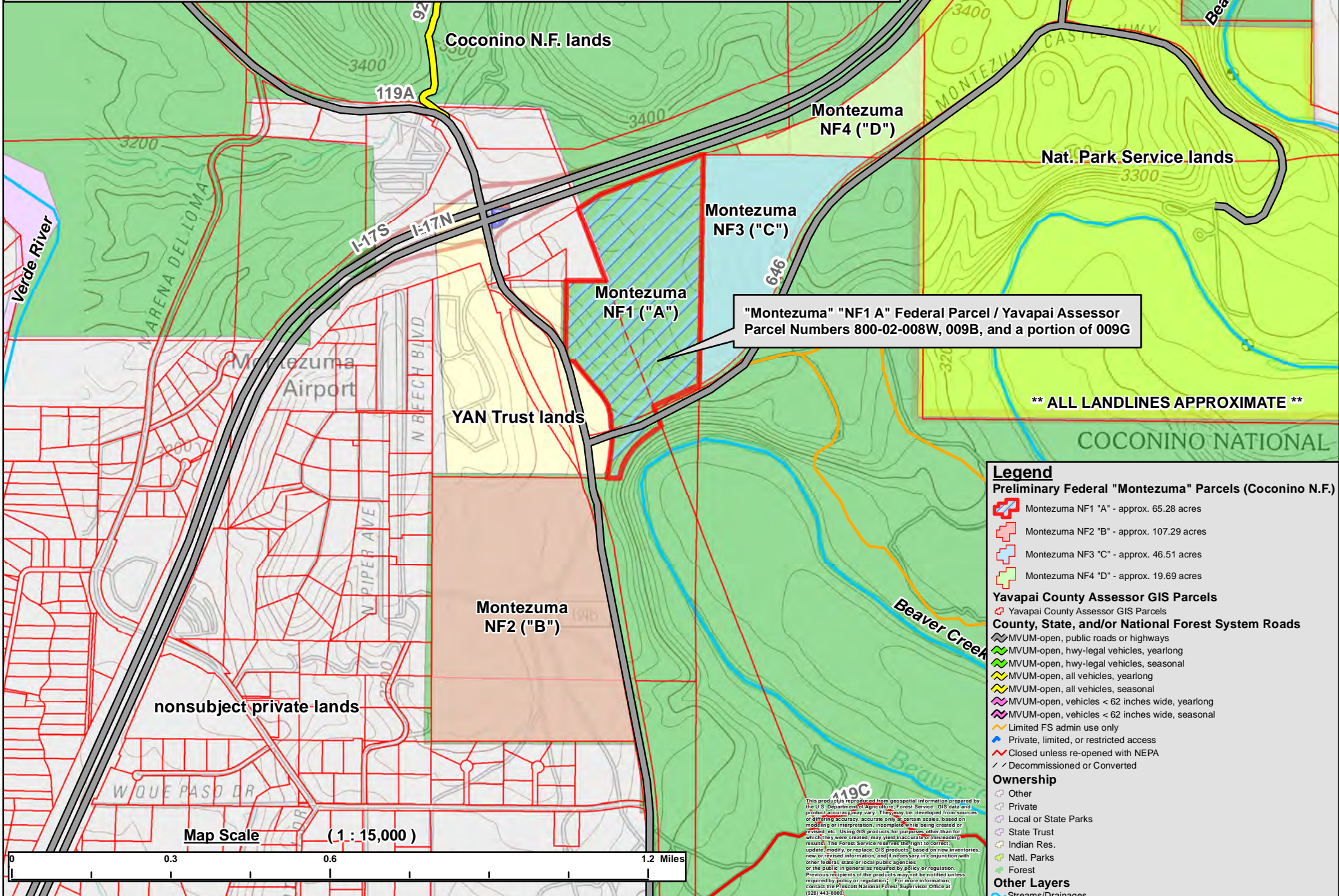


Yavapai-Apache Nation Land Exchange - Coconino National Forest Parcels
 "Montezuma NF 1A" Parcel / Yavapai Assessor Parcel Numbers 800-02-008W, 009B, and a portion of 009G
 "Camp Verde, AZ" USGS 7.5 minute quadrangle
 Section 18, T. 14 N., R. 5 E., G&SRM, Yavapai County, Arizona
 Coconino National Forest



"Montezuma" "NF1 A" Federal Parcel / Yavapai Assessor Parcel Numbers 800-02-008W, 009B, and a portion of 009G

**** ALL LANDLINES APPROXIMATE ****

Legend

Preliminary Federal "Montezuma" Parcels (Coconino N.F.)

- Montezuma NF1 "A" - approx. 65.28 acres
- Montezuma NF2 "B" - approx. 107.29 acres
- Montezuma NF3 "C" - approx. 46.51 acres
- Montezuma NF4 "D" - approx. 19.69 acres

Yavapai County Assessor GIS Parcels

- Yavapai County Assessor GIS Parcels

County, State, and/or National Forest System Roads

- MVUM-open, public roads or highways
- MVUM-open, hwy-legal vehicles, yearlong
- MVUM-open, hwy-legal vehicles, seasonal
- MVUM-open, all vehicles, yearlong
- MVUM-open, all vehicles, seasonal
- MVUM-open, vehicles < 62 inches wide, yearlong
- MVUM-open, vehicles < 62 inches wide, seasonal
- Limited FS admin use only
- Private, limited, or restricted access
- Closed unless re-opened with NEPA
- Decommissioned or Converted

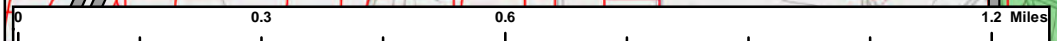
Ownership

- Other
- Private
- Local or State Parks
- State Trust
- Indian Res.
- Natl. Parks
- Forest

Other Layers

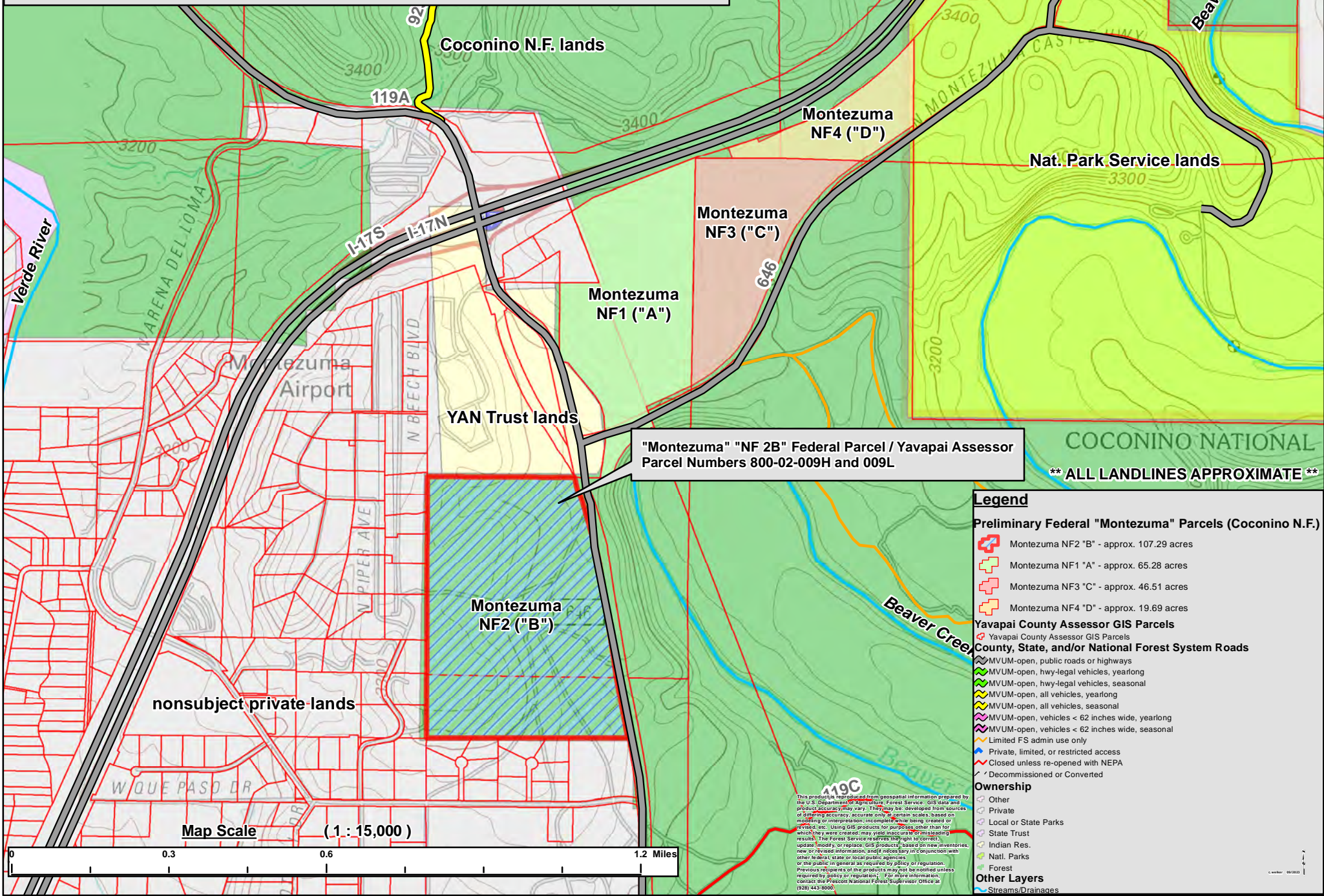
- Streams/Drainages

Map Scale (1 : 15,000)



This product is reproduced from geospatial information prepared by the U.S. Department of Agriculture, Forest Service. GIS data and product accuracy may vary. They may be developed from sources of differing accuracy, accurate only at certain scales, based on modeling or interpretation, incomplete when being created or revised, etc. Using GIS products for purposes other than for which they were created, may yield inaccurate or misleading results. The Forest Service reserves the right to correct, update, modify, or replace GIS products based on new information, new or revised information, and if necessary in conjunction with other federal, state or local public agencies or the public, in general as required by policy or regulation. Previous recipients of the products may not be notified unless required by policy or regulation. For more information, contact the Prescott National Forest Supervisor Office at (928) 443-8000.

Yavapai-Apache Nation Land Exchange - Coconino National Forest Parcels
 "Montezuma NF 2B" Parcel / Yavapai Assessor Parcel Numbers 800-02-009H and 009L
 "Camp Verde, AZ" USGS 7.5 minute quadrangle
 Sections 18 and 19, T. 14 N., R. 5 E., G&SRM, Yavapai County, Arizona
 Coconino National Forest

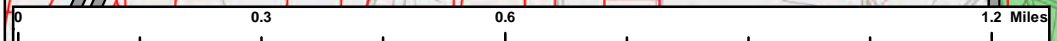


"Montezuma" "NF 2B" Federal Parcel / Yavapai Assessor Parcel Numbers 800-02-009H and 009L

** ALL LANDLINES APPROXIMATE **

- Legend**
- Preliminary Federal "Montezuma" Parcels (Coconino N.F.)**
- Montezuma NF2 "B" - approx. 107.29 acres
 - Montezuma NF1 "A" - approx. 65.28 acres
 - Montezuma NF3 "C" - approx. 46.51 acres
 - Montezuma NF4 "D" - approx. 19.69 acres
- Yavapai County Assessor GIS Parcels**
- Yavapai County Assessor GIS Parcels
- County, State, and/or National Forest System Roads**
- MVUM-open, public roads or highways
 - MVUM-open, hwy-legal vehicles, yearlong
 - MVUM-open, hwy-legal vehicles, seasonal
 - MVUM-open, all vehicles, yearlong
 - MVUM-open, all vehicles, seasonal
 - MVUM-open, vehicles < 62 inches wide, yearlong
 - MVUM-open, vehicles < 62 inches wide, seasonal
 - Limited FS admin use only
 - Private, limited, or restricted access
 - Closed unless re-opened with NEPA
 - Decommissioned or Converted
- Ownership**
- Other
 - Private
 - Local or State Parks
 - State Trust
 - Indian Res.
 - Natl. Parks
 - Forest
- Other Layers**
- Streams/Drainages

Map Scale (1 : 15,000)



This product is reproduced from geospatial information prepared by the U.S. Department of Agriculture, Forest Service. GIS data and product accuracy may vary. They may be developed from sources of differing accuracy, accurate only at certain scales, based on modeling or interpretation, incomplete, or being created or revised. Use of GIS products for purposes other than for which they were created, may yield inaccurate or misleading results. The Forest Service reserves the right to correct, update, modify, or replace GIS products based on new information, new or revised information, and if necessary in conjunction with other federal, state or local public agencies or the public in general as required by policy or regulation. Previous recipients of the products may not be notified unless required by policy or regulation. For more information, contact the Prescott National Forest Supervisor Office at (928) 443-8000.

Yavapai-Apache Nation Land Exchange - Coconino National Forest Parcels
 "Montezuma NF 3C" Parcel / Yavapai Assessor Parcel Number 800-02-008R
 "Camp Verde, AZ" USGS 7.5 minute quadrangle
 Section 17, T. 14 N., R. 5 E., G&SRM, Yavapai County, Arizona
 Coconino National Forest

Coconino N.F. lands

"Montezuma" "NF 3C" Federal Parcel / Yavapai Assessor Parcel Number 800-02-008R

Montezuma NF4 ("D")

Nat. Park Service lands

Montezuma NF3 ("C")

Montezuma NF1 ("A")

YAN Trust lands

Montezuma NF2 ("B")

nonsubject private lands

** ALL LANDLINES APPROXIMATE **

Legend

Preliminary Federal "Montezuma" Parcels (Coconino N.F.)

- Montezuma NF3 "C" - approx. 46.51 acres
- Montezuma NF2 "B" - approx. 107.29 acres
- Montezuma NF1 "A" - approx. 65.28 acres
- Montezuma NF4 "D" - approx. 19.69 acres

Yavapai County Assessor GIS Parcels

- Yavapai County Assessor GIS Parcels

County, State, and/or National Forest System Roads

- MVUM-open, public roads or highways
- MVUM-open, hwy-legal vehicles, yearlong
- MVUM-open, hwy-legal vehicles, seasonal
- MVUM-open, all vehicles, yearlong
- MVUM-open, all vehicles, seasonal
- MVUM-open, vehicles < 62 inches wide, yearlong
- MVUM-open, vehicles < 62 inches wide, seasonal
- Limited FS admin use only
- Private, limited, or restricted access
- Closed unless re-opened with NEPA
- Decommissioned or Converted

Ownership

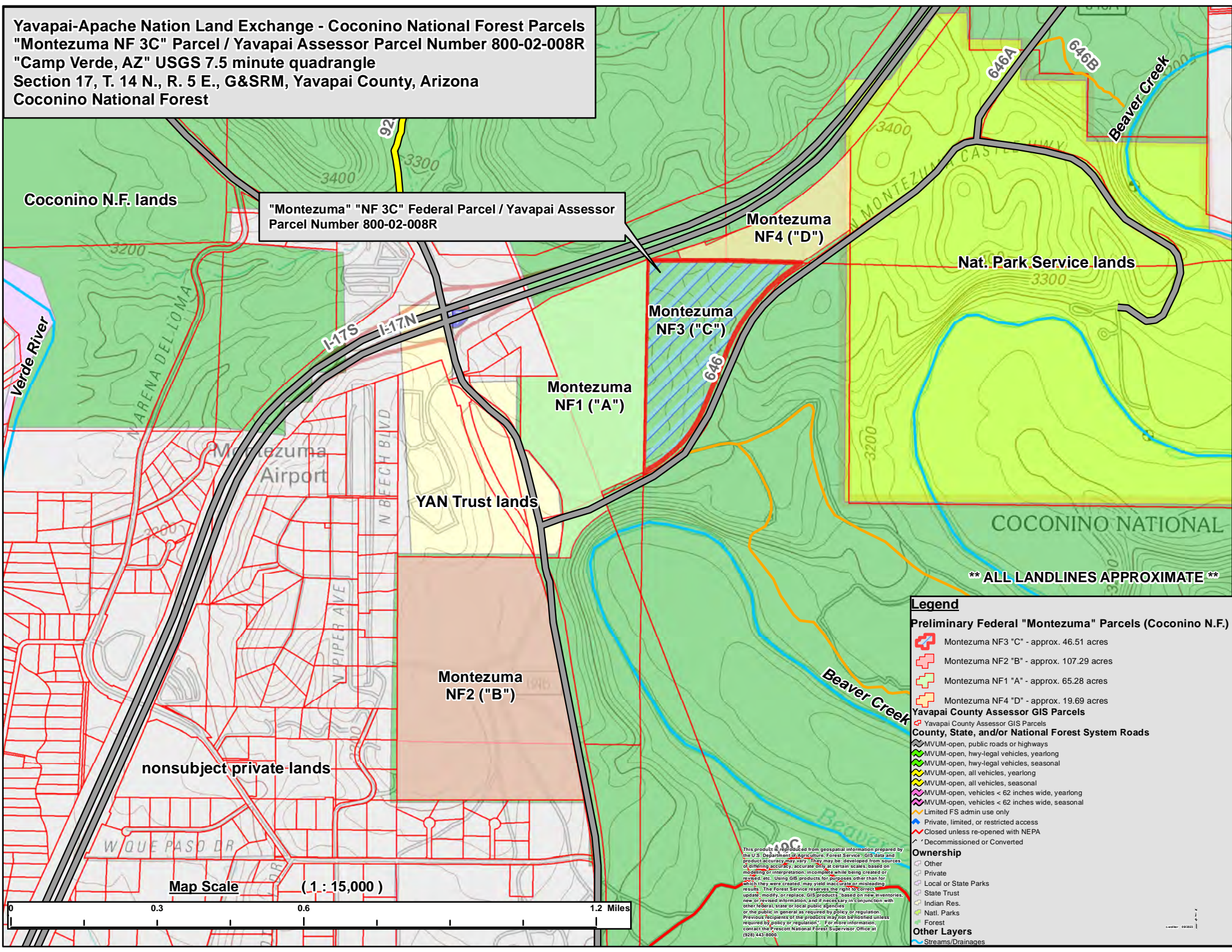
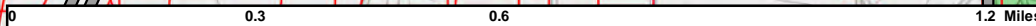
- Other
- Private
- Local or State Parks
- State Trust
- Indian Res.
- Natl. Parks
- Forest

Other Layers

- Streams/Drainages

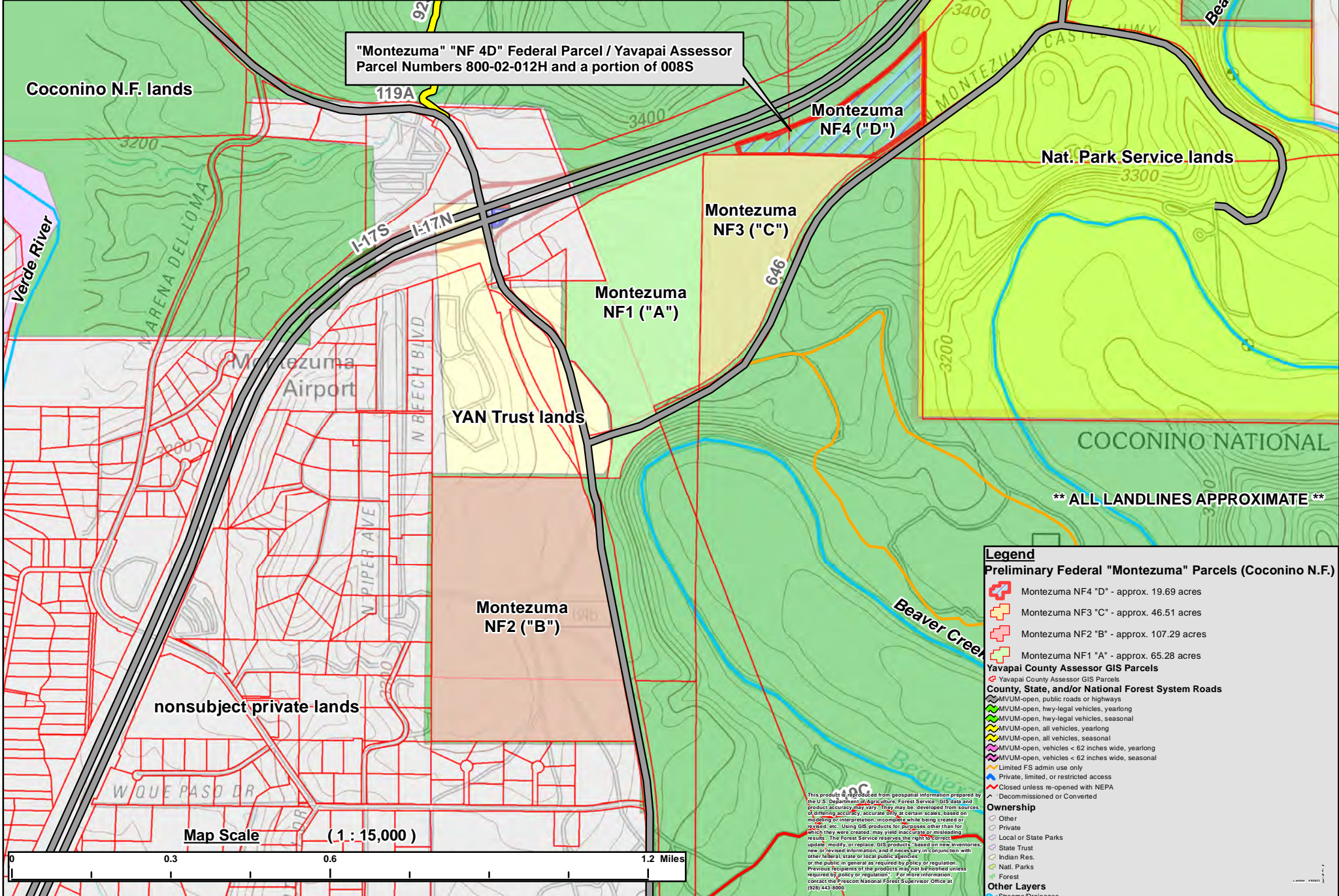
This product is reproduced from geospatial information prepared by the U.S. Department of Agriculture, Forest Service. GIS data and product accuracy may vary. They may be developed from sources of differing accuracy, accurate only at certain scales, based on modeling or interpretation, incomplete while being created or revised, etc. Using GIS products for purposes other than for which they were created may yield inaccurate or misleading results. The Forest Service reserves the right to correct, update, modify, or replace GIS products based on new inventories, new or revised information, and if necessary in conjunction with other Federal, state or local agencies. This information is provided for informational purposes only and is not intended for use in any legal proceeding or the public in general as required by policy or regulation. Previous recipients of the products may have obtained unless required by policy or regulation. For more information, contact the Prescott National Forest Supervisor Office at (928) 443-8000.

Map Scale (1 : 15,000)



Yavapai-Apache Nation Land Exchange - Coconino National Forest Parcels
"Montezuma NF 4D" Parcel / Yavapai Assessor Parcel Numbers 800-02-012H and a portion of 008S
"Camp Verde, AZ" USGS 7.5 minute quadrangle
Sections 7 and 8, T. 14 N., R. 5 E., G&SRM, Yavapai County, Arizona
Coconino National Forest

"Montezuma" "NF 4D" Federal Parcel / Yavapai Assessor Parcel Numbers 800-02-012H and a portion of 008S



**** ALL LANDLINES APPROXIMATE ****

Legend

Preliminary Federal "Montezuma" Parcels (Coconino N.F.)

- Montezuma NF4 "D" - approx. 19.69 acres
- Montezuma NF3 "C" - approx. 46.51 acres
- Montezuma NF2 "B" - approx. 107.29 acres
- Montezuma NF1 "A" - approx. 65.28 acres

Yavapai County Assessor GIS Parcels

- Yavapai County Assessor GIS Parcels

County, State, and/or National Forest System Roads

- MVUM-open, public roads or highways
- MVUM-open, hwy-legal vehicles, yearlong
- MVUM-open, hwy-legal vehicles, seasonal
- MVUM-open, all vehicles, yearlong
- MVUM-open, all vehicles, seasonal
- MVUM-open, vehicles < 62 inches wide, yearlong
- MVUM-open, vehicles < 62 inches wide, seasonal
- Limited FS admin use only
- Private, limited, or restricted access
- Closed unless re-opened with NEPA
- Decommissioned or Converted

Ownership

- Other
- Private
- Local or State Parks
- State Trust
- Indian Res.
- Nat. Parks
- Forest

Other Layers

- Streams/Drainages

This product is reproduced from geospatial information prepared by the U.S. Department of Agriculture, Forest Service. GIS data and product accuracy may vary. They may be developed from sources of differing accuracy, accurate only at certain scales, based on modeling or interpretation, incomplete while being created or revised, etc. Using GIS products for purposes other than for which they were created, may yield inaccurate or misleading results. The Forest Service reserves the right to correct, update, modify, or replace GIS products based on new inventories, new or revised information, and if necessary in conjunction with other federal, state or local public agencies. This information is for informational purposes only and is not intended for use in the public in general as required by policy or regulation. Previous recipients of the products may have obtained unless required by policy or regulation. For more information, contact the Prescott National Forest Supervisor's Office at (928) 443-8000.

Map Scale (1 : 15,000)

