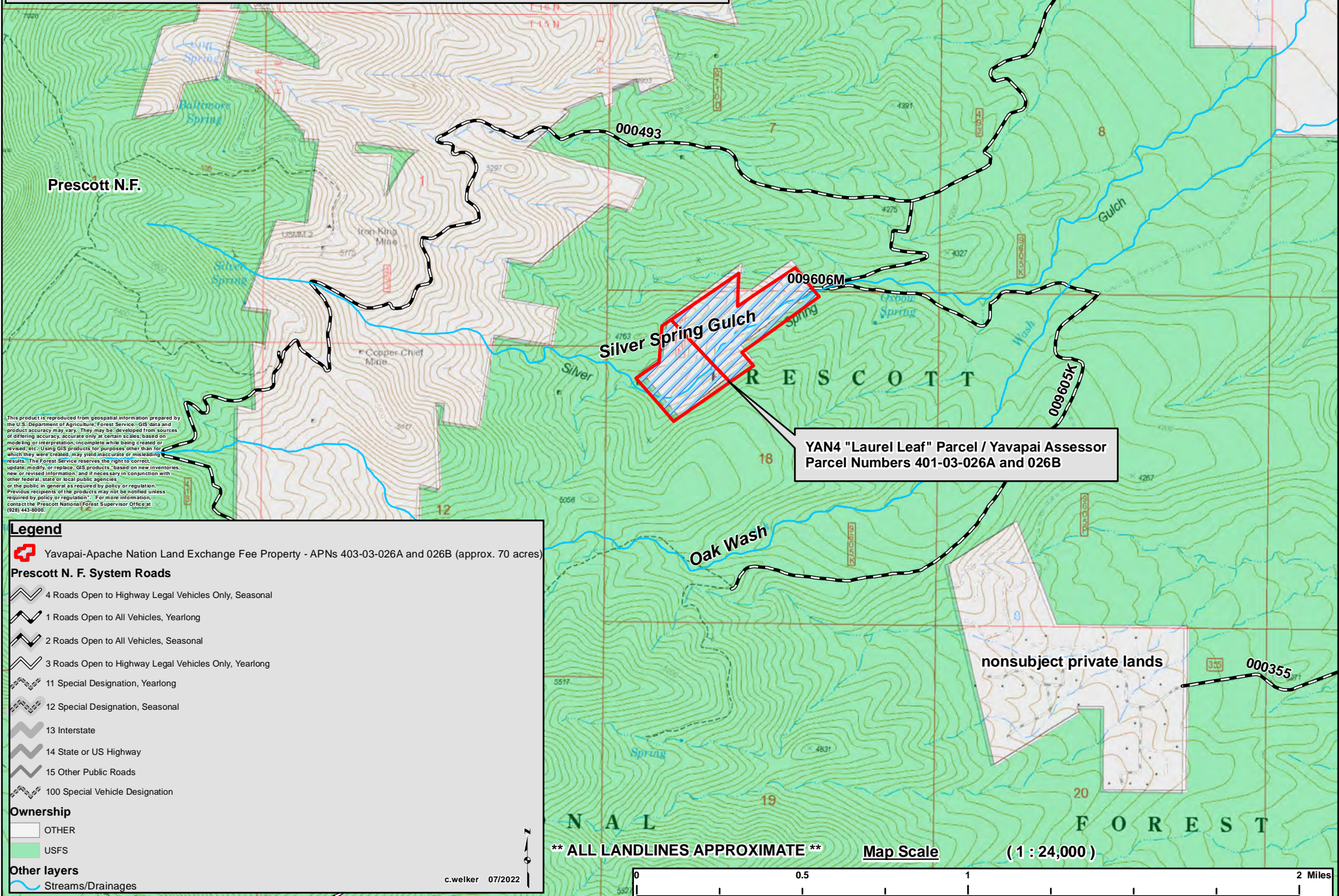


**Yavapai-Apache Nation Land Exchange - Yavapai-Apache Nation Fee Simple Parcels  
 YAN4 "Laurel Leaf" Parcel / Yavapai Assessor Parcel Numbers 403-03-026A and 026B  
 "Cottonwood, AZ" USGS 7.5 minute quadrangle  
 Sections 17 & 18, T. 15 N., R. 3 E., G&SRM, Yavapai County, Arizona  
 Prescott National Forest**



This product is reproduced from geospatial information prepared by the U.S. Department of Agriculture, Forest Service. GIS data and product accuracy may vary. They may be developed from sources of differing accuracy, accurate only at certain scales, based on modeling or interpretation, incomplete while being created or revised, or using GIS products for purposes other than for which they were created, may yield inaccurate or misleading results. The Forest Service reserves the right to correct, update, modify, or replace, GIS products, based on new inventories, new or revised information, and if necessary in conjunction with other federal, state or local public agencies, or the public in general as required by policy or regulation. Previous requests of the products may not be needed unless required by policy or regulation. For more information, contact the Prescott National Forest Supervisor Office at (928) 443-8000.

**YAN4 "Laurel Leaf" Parcel / Yavapai Assessor  
 Parcel Numbers 401-03-026A and 026B**

**Legend**

- Yavapai-Apache Nation Land Exchange Fee Property - APNs 403-03-026A and 026B (approx. 70 acres)
- Prescott N. F. System Roads**
- 4 Roads Open to Highway Legal Vehicles Only, Seasonal
- 1 Roads Open to All Vehicles, Yearlong
- 2 Roads Open to All Vehicles, Seasonal
- 3 Roads Open to Highway Legal Vehicles Only, Yearlong
- 11 Special Designation, Yearlong
- 12 Special Designation, Seasonal
- 13 Interstate
- 14 State or US Highway
- 15 Other Public Roads
- 100 Special Vehicle Designation
- Ownership**
- OTHER
- USFS
- Other layers**
- Streams/Drainages

c.welker 07/2022

**\*\* ALL LANDLINES APPROXIMATE \*\***

**Map Scale (1 : 24,000)**

0 0.5 1 2 Miles