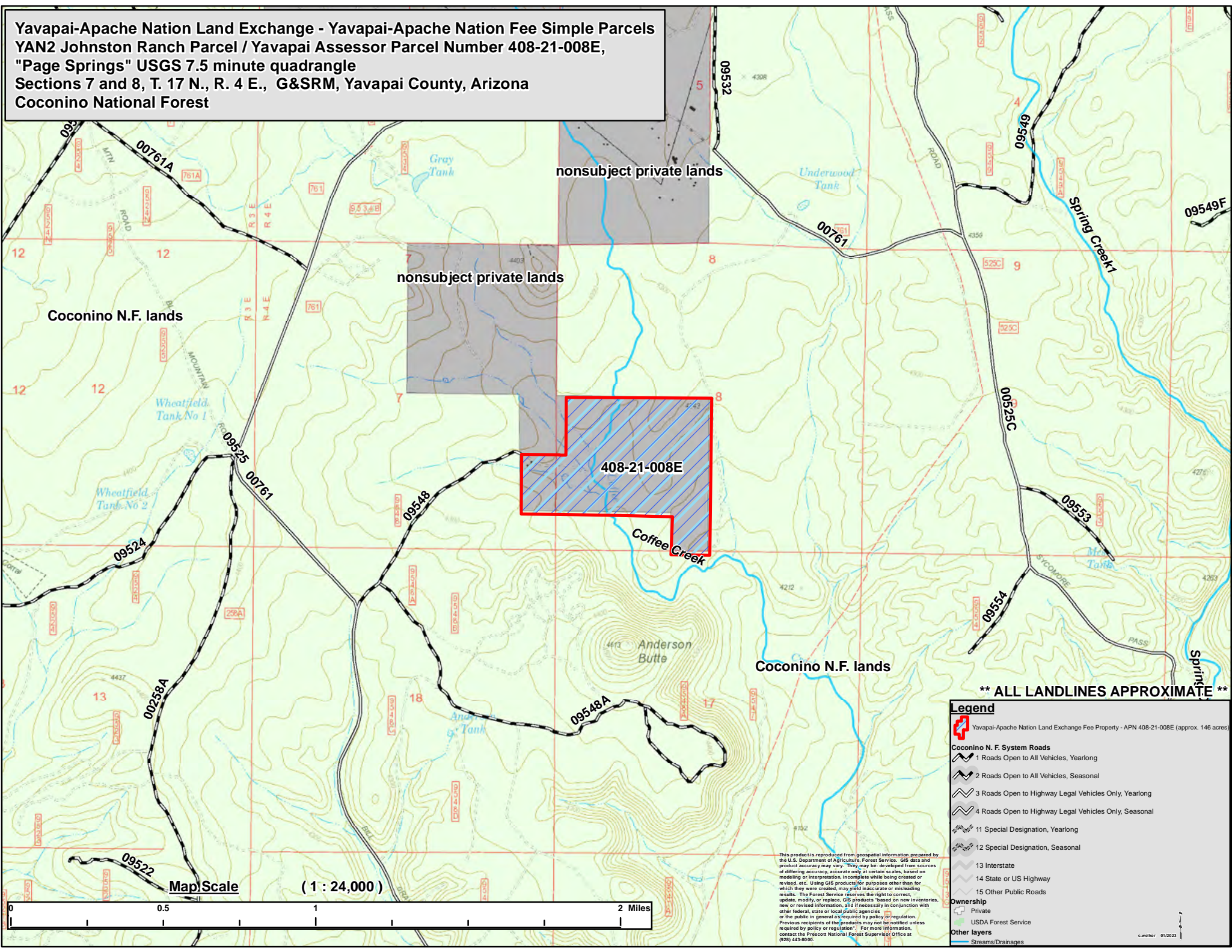


Yavapai-Apache Nation Land Exchange - Yavapai-Apache Nation Fee Simple Parcels
YAN2 Johnston Ranch Parcel / Yavapai Assessor Parcel Number 408-21-008E,
"Page Springs" USGS 7.5 minute quadrangle
Sections 7 and 8, T. 17 N., R. 4 E., G&SRM, Yavapai County, Arizona
Coconino National Forest

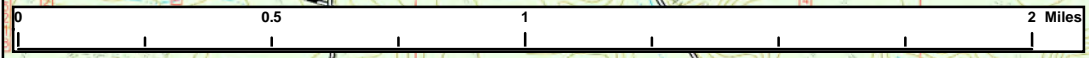


**** ALL LANDLINES APPROXIMATE ****

Legend

- Yavapai-Apache Nation Land Exchange Fee Property - APN 408-21-008E (approx. 146 acres)
- Coconino N. F. System Roads**
 - 1 Roads Open to All Vehicles, Yearlong
 - 2 Roads Open to All Vehicles, Seasonal
 - 3 Roads Open to Highway Legal Vehicles Only, Yearlong
 - 4 Roads Open to Highway Legal Vehicles Only, Seasonal
 - 11 Special Designation, Yearlong
 - 12 Special Designation, Seasonal
 - 13 Interstate
 - 14 State or US Highway
 - 15 Other Public Roads
- Ownership**
 - Private
 - USDA Forest Service
- Other layers**
 - Streams/Drainages

Map Scale (1 : 24,000)



This product is reproduced from geospatial information prepared by the U.S. Department of Agriculture, Forest Service. GIS data and product accuracy may vary. They may be developed from sources of differing accuracy, accurate only at certain scales, based on modeling or interpretation, incomplete while being created or revised, etc. Using GIS products for purposes other than for which they were created, may yield inaccurate or misleading results. The Forest Service reserves the right to correct, update, modify or replace GIS products based on new inventories, new or revised information, and if necessary in conjunction with other federal, state or local public agencies or the public in general as required by policy or regulation. Previous recipients of the products may not be notified unless required by policy or regulation. For more information, contact the Prescott National Forest Supervisor's Office at (928) 443-8060.