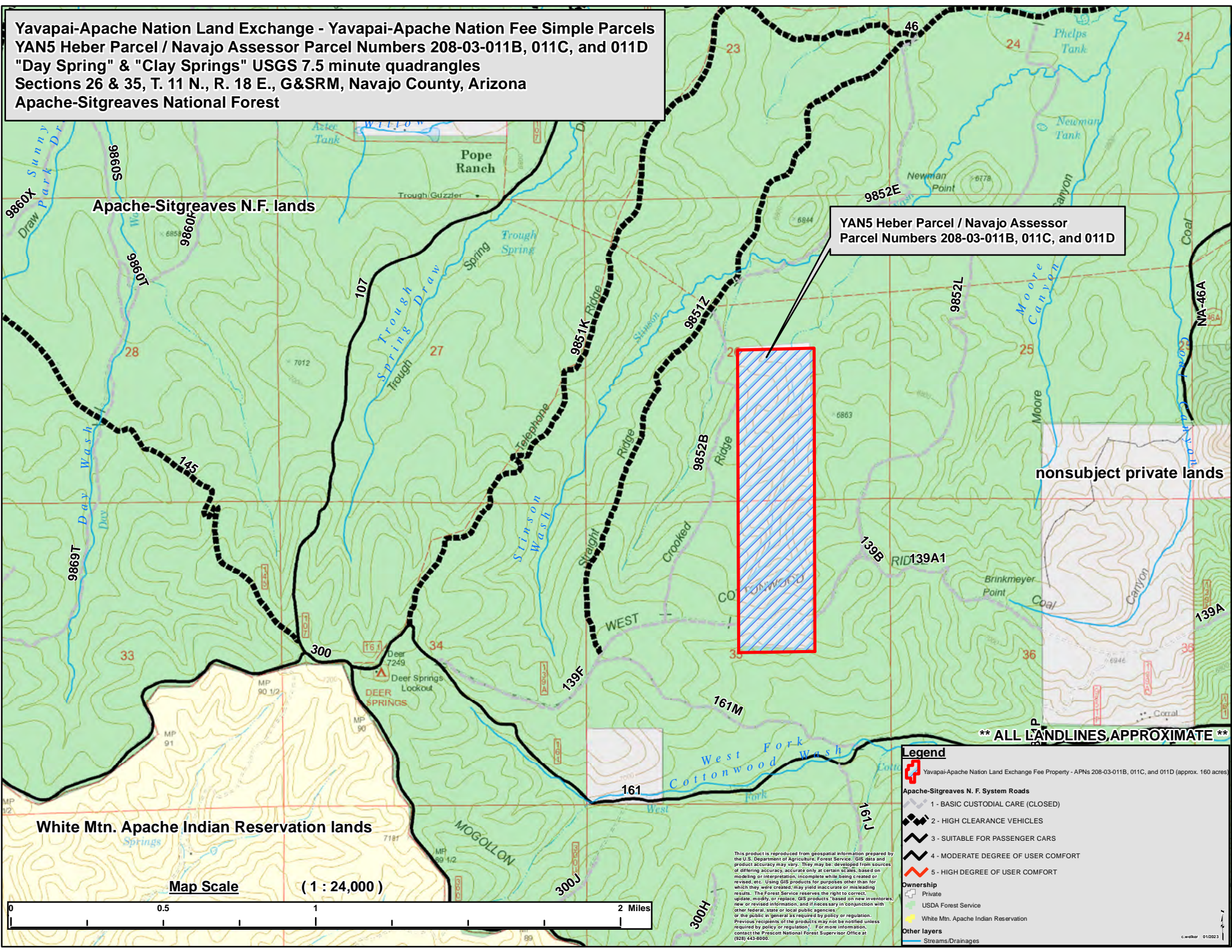


**Yavapai-Apache Nation Land Exchange - Yavapai-Apache Nation Fee Simple Parcels
 YAN5 Heber Parcel / Navajo Assessor Parcel Numbers 208-03-011B, 011C, and 011D
 "Day Spring" & "Clay Springs" USGS 7.5 minute quadrangles
 Sections 26 & 35, T. 11 N., R. 18 E., G&SRM, Navajo County, Arizona
 Apache-Sitgreaves National Forest**

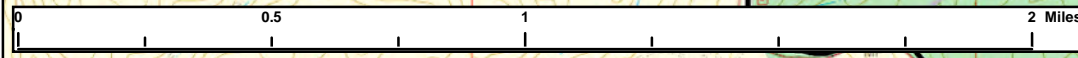


**YAN5 Heber Parcel / Navajo Assessor
 Parcel Numbers 208-03-011B, 011C, and 011D**

**** ALL LANDLINES APPROXIMATE ****

White Mtn. Apache Indian Reservation lands

Map Scale (1 : 24,000)



This product is reproduced from geospatial information prepared by the U.S. Department of Agriculture, Forest Service. GIS data and product accuracy may vary. They may be developed from sources of differing accuracy, accurate only at certain dates, based on modeling or interpretation, incomplete while being created or revised, etc. Using GIS products for purposes other than for which they were created may yield inaccurate or misleading results. The Forest Service reserves the right to correct, update, modify or replace GIS products based on new inventories, new or revised information, and if necessary in conjunction with other federal, state or local public agencies or the public in general as required by policy or regulation. Previous recipients of the products may not be notified unless required by policy or regulation. If you have information, contact the Prescott National Forest Supervisor Office at (928) 443-9000.

Legend

- Yavapai-Apache Nation Land Exchange Fee Property - APNs 208-03-011B, 011C, and 011D (approx. 160 acres)
- Apache-Sitgreaves N. F. System Roads**
 - 1 - BASIC CUSTODIAL CARE (CLOSED)
 - 2 - HIGH CLEARANCE VEHICLES
 - 3 - SUITABLE FOR PASSENGER CARS
 - 4 - MODERATE DEGREE OF USER COMFORT
 - 5 - HIGH DEGREE OF USER COMFORT
- Ownership**
 - Private
 - USDA Forest Service
 - White Mtn. Apache Indian Reservation
- Other layers**
 - Streams/Drainages