



**Yavapai-Apache Nation**  
2400 W. Datsi Ave.  
Camp Verde, AZ 86322



# YAVAPAI-APACHE NATION

July 2021 Newsletter

## STUDENT CLOTHING ALLOWANCE PROGRAM



The Yavapai-Apache Nation has received funds through the American Rescue Plan Act (ARPA) Coronavirus State and Local Fiscal Recovery Funds to respond to the ongoing impacts of the COVID-19 public health emergency, including negative economic impacts. On July 8, 2021, the Tribal Council approved the distribution of a portion of the Recovery Funds to assist households through a student clothing allowance distribution under the Student Clothing Allowance Program for students ages 3-19. Visit our website, [yavapai-apache.org/student-clothing-allowance/](http://yavapai-apache.org/student-clothing-allowance/), to download the application. You will need to return the acknowledgment of the Student Clothing Policy, the receipts from the last disbursement, and verification of the child/children enrolled in school (i.e. report card, attendance letter, letter from school). If you have any questions, please contact Karla Reimer at **928-567-1003** (office) or **928-301-6181** (cell).

### HAVE YOU VISITED OUR WEBSITE?

Visit [yavapai-apache.org](http://yavapai-apache.org) to see our new website!

## COVID-19 Vaccination

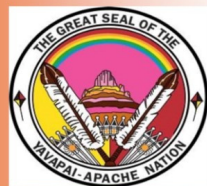
**The COVID-19 vaccine is one of the best ways that we can promote a healthy and safe community.**

The COVID-19 Pfizer vaccine is now available for **anyone** 12 years and older. *Parental consent is required to receive the vaccination for 17 years and younger*

**Covid-19 vaccinations will be scheduled by appointment only**

**\$25 Vaccine Incentive** is available to Yavapai-Apache Nation (YAN) Members 12 years through 17 years old. Must provide a complete second dose vaccination card to be eligible for the \$25 Subway gift card.

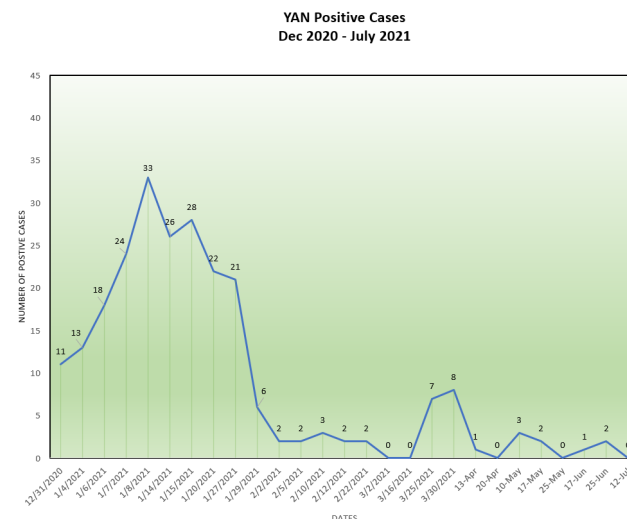
**\$100 Vaccine Incentive** is available to Yavapai-Apache Nation (YAN) Members 18 years and older. Must provide a complete second dose vaccination card to be eligible for the \$100 Walmart gift card.



**YAVAPAI-APACHE HEALTH CENTER**  
928-567-2168



## COVID CASE NUMBERS



## GIANT ALFALFA HAY BALES FOR SALE

We are selling GIANT Alfalfa Hay Bales. The Tribal Member discount price is \$140.00 for one Giant Alfalfa Hay Bale. For more information, please call the Agricultural Resources Department at **928-592-7158**.

## SCHOOL START DATES

### August 2, 2021

- Camp Verde Unified School District
- American Heritage Academy Schools
- Beaver Creek School District
- Montessori Children's House (Kindergarteners & New Students)

### August 4, 2021

- Cottonwood Oak Creek School District
- Mingus Union High School (Freshman Class)
- Montessori Children's House (returning preschoolers)

### August 5, 2021

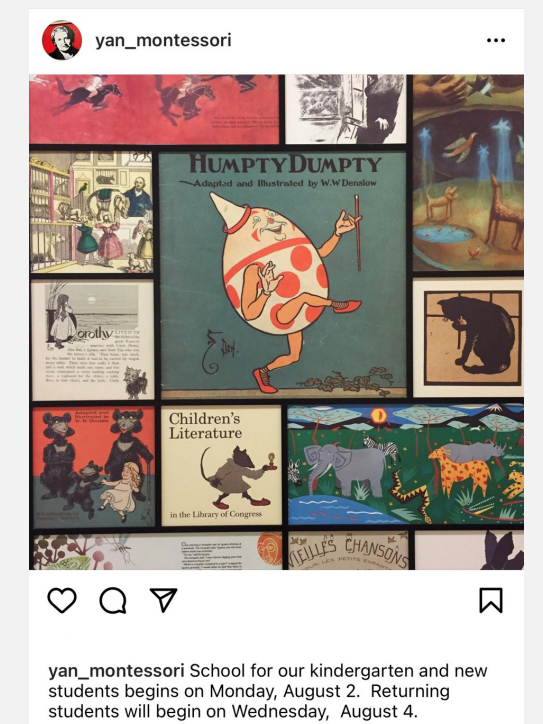
- Mingus Union High School (Sophomore, Junior and Senior Classes)

### August 6, 2021

- Clarkdale-Jerome School District

## NEW ON INSTAGRAM

Montessori Children's House is now on Instagram! Follow @yan\_montessori for the latest school news and updates.



## ACTIVE RESOLUTIONS

---

Resolutions passed by Tribal Council in response to the Coronavirus (COVID-19):

- 50-20 Adopting Emergency Council Procedures During Coronavirus (COVID-19) Outbreak
- 60-20 Declaring a State of Emergency Due to the Coronavirus (COVID-19) Outbreak Authorizes the Executive Offices of the Chairman and Vice-Chairwoman (the "Executive") to coordinate emergency and disaster relief and seek assistance from federal, state, other tribal governments, and local and private agencies to address the public health emergency created by the Coronavirus.
- 95-20 Approving a Reopening of the Cliff Castle Casino and Hotel Under a Reopening Operations Plan and Requiring Implementation of Ongoing Coronavirus (COVID-19) Public Safety Measures  
Approval to re-open Cliff Castle Casino Hotel on June 1, 2020 at 10am with safety measures implemented.
- 104-21 Adopting the revised Yavapai-Apache Nation COVID-19 Workplace Safety Policy, the Yavapai-Apache Nation Subordinate Economic Organization (SEO) COVID-19 Workplace Safety Plan, and the Yavapai-Apache Nation COVID-19 Safety Policy for Committees, Commissions, and Boards  
Reduce face-to-face business where feasible. Employees who are not fully vaccinated must wear a mask when they are within 6 feet of other persons, unless there is a plexiglass partition between the employee and other persons. Employees must also ask their clients, vendors, and customers who are not fully vaccinated to wear a mask if they are within 6 feet of other persons.
- 20-21 Suspension Evictions Under Housing Programs by Yavapai-Apache Tribal Housing  
The suspension of evictions under housing programs managed by Yavapai-Apache Tribal Housing (YANTH) only applies to evictions based on nonpayment of rent it does not apply to evictions based on violations of YANTH policies or other grounds for eviction besides nonpayment of rent.
- 98-21 Rescinding Tribal Council Resolutions Nos. 70-20, 84-20, and 214-20  
The stay-at-home order, closure of the Yavapai-Apache Nation Reservation Lands, and the curfew are lifted, as well as the restrictions on social events within the Nation's Lands. The YAN COVID-19 Workplace Safety Policy, the YAN COVID-19 Safety Policy for Committees, Commissions, and Boards, and the YAN Subordinate Economic Organization Workplace Safety Policy remain in effect.

## EMERGENCY RENTAL ASSISTANCE AVAILABLE

---

The Yavapai-Apache Nation COVID-19 Emergency Rental Assistance Program is available until 12/31/21 to assist Tribal Member Households that are unable to pay rent or utilities due to the pandemic. Visit [yavapai-apache.org/yavapai-apache-nation-covid-19-rental-assistance-program/](http://yavapai-apache.org/yavapai-apache-nation-covid-19-rental-assistance-program/) or call (928) 649-7123 for more information.

## JUNE NEW HIRES & PROMOTIONS

---

### NEW HIRES

Tribal Gaming Office: William Jones (Compliance Agent), Austin Dunn (Compliance Agent)

Agriculture: Delight Lyons (Farm Laborer)

Whitehills Chevron: Richard Diaz (Cashier/Stockier)

Public Works: Frances Grey (Custodian)

Senior Program: Marisela Reyes (Driver)

Distant Drums RV Resort: Karen Sieber (Front Desk Clerk)

### PROMOTIONS/TRANSFERS

Tribal Housing: Arlana Loring (Administrative Assistant), Jessica Herrera (Housing Counselor)

Whitehills Chevron: John Lopez (Shift Supervisor)

Distant Drums RV Resort: Alice Faulhaber (Assistant Manager)

## YAVAPAI-APACHE NATION IS HIRING

---

The Yavapai-Apache Nation is hiring! Current job openings and applications can be found on our website at [yavapai-apache.org/employment](http://yavapai-apache.org/employment). The Yavapai-Apache Nation offers excellent benefits including: Medical, Dental, Vision, Short Term and Long Term Disability, and Life Insurance. Employees receive 10 days of PTO their first year and 15 days of PTO their second year. Employees also have 14 holidays and are partially vested in their 401K on their first day. Please email your application and resume (if available) to [churley@yan-tribe.org](mailto:churley@yan-tribe.org) or [ppierce@yan-tribe.org](mailto:ppierce@yan-tribe.org). You can also mail or drop off an application at the Yavapai-Apache Nation Human Resources Office located at 2400 W. Datsi Ave., Camp Verde, AZ 86322. Please call **928-567-1062** with any questions.

## CONTACT NUMBERS

---

Administration	Karla Reimer	928-301-6181
Executive Office	Matilda Cassadore	928-592-2699
Child Care Manager	Ophelia Tewawina	928-300-1146
Food Bank	Monique Prigmore	928-649-7125
Tribal Housing	Savannah Sandoval	928-301-0229
Medical Clinic	Trudy Clark	928-451-2005
Yavapai-Apache Police		928-649-7142
Camp Verde Dispatch	If unable to reach YAPD	928-554-8370
Senior Program	Bernadette Williams	928-451-4102

For our complete Contact List, please visit our website [yavapai-apache.org](http://yavapai-apache.org).